



KCP HEAVY INDUSTRIES CO.,LTD.

Established the Limit of Concrete Pump Technology

*Sophisticated Design & Engineering
Innovative Simple Pumping System
State of the Art Structure*



▲ wireless remote controller



▲ control v/v for outrigger



▲ switch box



▲ auto grease lubricant



▲ high pressure water pump



▲ hydraulic block assembly



▲ large capacity hopper



▲ electric control panel & control v/v for boom



▲ large capacity oil cooler

Our Pride...

KCP24ZX100

■ Boom specifications

Vertical reach	23.2 M	(63' 3")
Horizontal reach	19.8 M	(54' 2")
Unfolding height	5.4 M	(14' 10")
Section articulation	94° / 180° / 260° / 250°	
Rotation	370°	
Delivery line	125 mm	(5")
Proportional boom	yes	
End hose length	3 M	(10')
Outrigger spread-front	5.6 M	(15' 4")
Outrigger spread-rear	2.65 M	(7' 3")
Max. outrigger weight	11000 kg	(24280 lbs)

■ Pump specifications

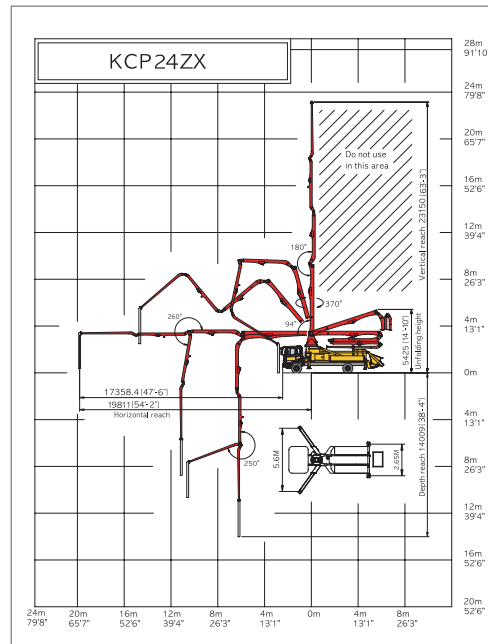
Maximum output	90 m³/h	(118 yd³/h)
Concrete cylinder	Ø230 X 1400mm	(9" X 55")
Stroke per minute	28	
Concrete pressure	69 bar	(1000 psi)
Hopper capacity	0.6 m³	(21 ft³)
S-tube	Ø230 X Ø180	(8" X 7")
Hydraulic pump	Kawasaki K3V180S	
Cycling system	Hydraulic with manual overrides	
Max aggregate size	60 mm	(2 1/2")

*Maximum theoretical values listed.

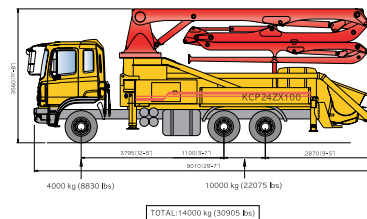
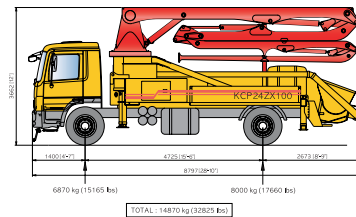
■ Truck mounted specifications

Available SCANA, VOLVO, MERCEDES BENZ, MAN, IVECO, DAF, MAZ, ASTRA, MR MACK, AMERICAN LAFRANCE, HYUNDAI, DAEWOO ...

■ Working diagram



■ Weight diagram



*Photos and drawings are for illustrative purpose only.
*Dimension will vary with different truck makers, models and specifications.
*Right to make technical amendments reserved.

Our Pride...

KCP28ZX120

■ Boom specifications

Vertical reach	27.8 M	(91' 1")
Horizontal reach	24 M	(78' 9")
Reach from front of truck	21.4 M	(70' 4")
Unfolding height	6.5 M	(21' 4")
Section articulation	96° / 180° / 260° / 245°	
Rotation	370°	
Delivery line	125 mm	(5")
Proportional boom	Yes	
End hose length	3 M	(10')
Outrigger spread-front	5.8 M	(19')
Outrigger spread-rear	6.15 M	(9')
Max.outrigger weight	13,000 kg	(28700 lbs)

■ Pump specifications

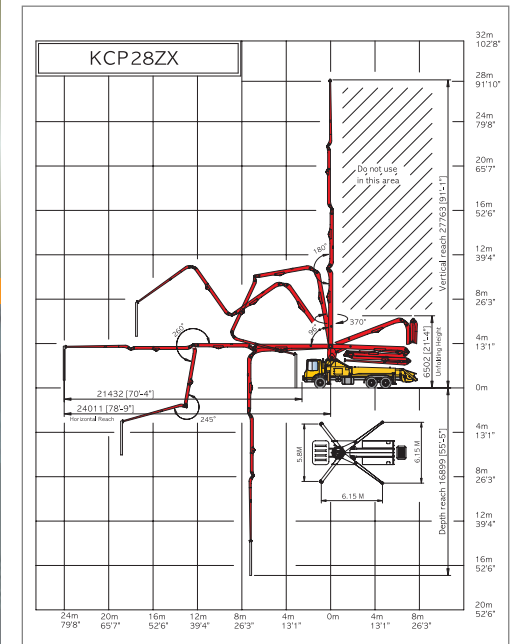
Maximum output	105 m³/h	(137 yd³/h)
Concrete cylinder	Ø230×1800mm	(9"×71")
Stroke per minute	23.5	
Concrete pressure(rod)	69 bar	(1000 psi)
Hopper capacity	0.6 m³	(21 ft³)
S-tube	Ø200×Ø180	(8"×7")
Hydraulic pump	Kawasaki K3V180S (Rexroth A11VO190)	
Cycling system	Hydraulic with manual overrides	
Max. aggregate size	60 mm	(2 1/2")

*Maximum theoretical values listed.

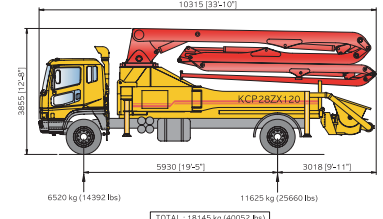
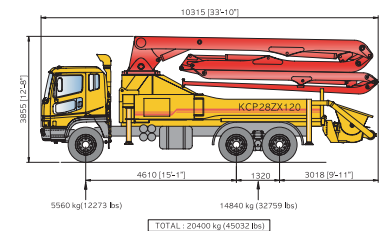
■ Truck mounted specifications

Available SCANA, VOLVO, MERCEDES BENZ, MAN, IVECO, DAF, MAZ, ASTRA, MR MACK, AMERICAN LAFRANCE, HYUNDAI, DAEWOO ...

■ Working diagram



■ Weight diagram



*Photos and drawings are for illustrative purpose only.
*Dimension will vary with different truck makers, models and specifications.
*Right to make technical amendments reserved.

Our Pride...

KCP32RZ5170

■ Boom specifications

Vertical reach	31,6 M	(103' 7")
Horizontal reach	27,7 M	(91')
Reach from front of truck	25,4 M	(83' 3")
Unfolding height	5,8 M	(19' 1")
Section articulation	90° / 180° / 240° / 220° / 220°	
Rotation	370°	
Delivery line	125 mm	(5")
Proportional boom	Yes	
End hose length	3 M	(10')
Outrigger spread-front	6,18 M	(20' 3")
Outrigger spread-rear	7,15 M	(23' 5")
Max.outrigger weight	20,500 kg	(45250 lbs)

■ Pump specifications

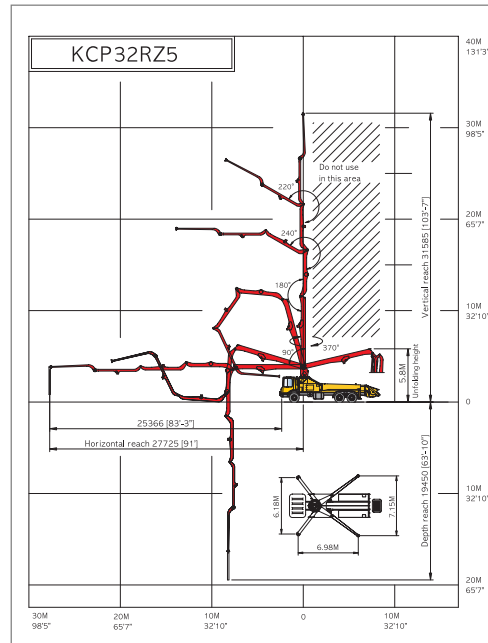
Maximum output	170 m³/h	(222 yd³/h)
Concrete cylinder	Ø230×2100mm	(9"×83")
Stroke per minute	32	
Concrete pressure(rod)	72 bar	(1044 psi)
Hopper capacity	0,6 m³	(21 ft³)
S-tube	Ø200×Ø180	(8"×7")
Hydraulic pump	Kawasaki K3V140DT (Rexroth A11VQ260)	
Cycling system	Hydraulic with manual overrides	
Max. aggregate size	60 mm	(2 1/2")

※Maximum theoretical values listed.

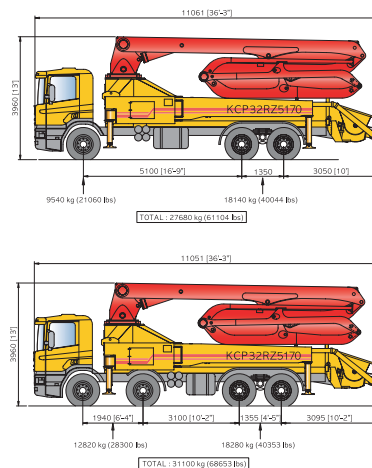
■ Truck mounted specifications

Available SCANA, VOLVO, MERCEDES BENZ,
MAN, IVECO, DAF, MAZ, ASTRA, MR MACK,
AMERICAN LAFRANCE, HYUNDAI, DAEWOO ...

■ Working diagram



■ Weight diagram



※Photos and drawings are for illustrative purpose only.
※Dimension will vary with different truck makers, models and specifications.
※Right to make technical amendments reserved.

Our Pride...

KCP36RX170

■ Boom specifications

Vertical reach	36 M	(118' 1")
Horizontal reach	32,2 M	(105' 8")
Reach from front of truck	29,8 M	(97' 8")
Unfolding height	9,1 M	(29' 10")
Section articulation	94° / 180° / 240° / 245°	
Rotation	370°	
Delivery line	125 mm	(5")
Proportional boom	Yes	
End hose length	4 M	(13')
Outrigger spread-front	6,18 M	(20' 3")
Outrigger spread-rear	7,15 M	(23' 5")
Max.outrigger weight	20,500 kg	(45250 lbs)

■ Pump specifications

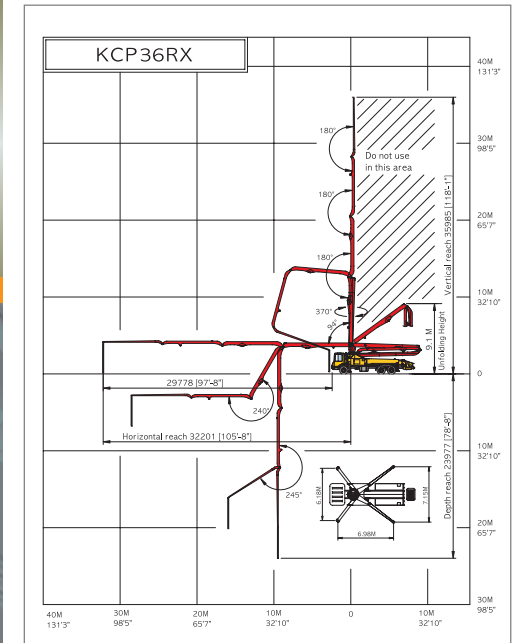
Maximum output	170 m³/h	(222 yd³/h)
Concrete cylinder	Ø230×2100mm	(9"×83")
Stroke per minute	32	
Concrete pressure(rod)	72 bar	(1044 psi)
Hopper capacity	0,6 m³	(21 ft³)
S-tube	Ø200×Ø180	(8"×7")
Hydraulic pump	Kawasaki K3V140DT (Rexroth A11VQ260)	
Cycling system	Hydraulic with manual overrides	
Max. aggregate size	60 mm	(2 1/2")

※Maximum theoretical values listed.

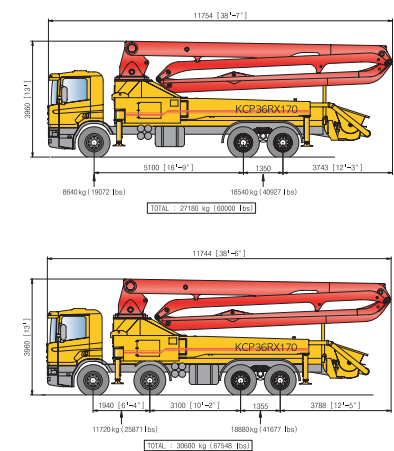
■ Truck mounted specifications

Available SCANA, VOLVO, MERCEDES BENZ,
MAN, IVECO, DAF, MAZ, ASTRA, MR MACK,
AMERICAN LAFRANCE, HYUNDAI, DAEWOO ...

■ Working diagram



■ Weight diagram



※Photos and drawings are for illustrative purpose only.
※Dimension will vary with different truck makers, models and specifications.
※Right to make technical amendments reserved.

Our Pride...

KCP36ZX170



■ Boom specifications

Vertical reach	35.7 M	(117' 2")
Horizontal reach	32 M	(105')
Reach from front of truck	29.5 M	(96' 11")
Unfolding height	9.3 M	(30' 6")
Section articulation	94° / 180° / 250° / 245°	
Rotation	370°	
Delivery line	125 mm	(5")
Proportional boom	Yes	
End hose length	4 M	(13')
Outrigger spread-front	6.18 M	(20' 3")
Outrigger spread-rear	7.15 M	(23' 5")
Max.outrigger weight	20,500 kg	(45250 lbs)

■ Pump specifications

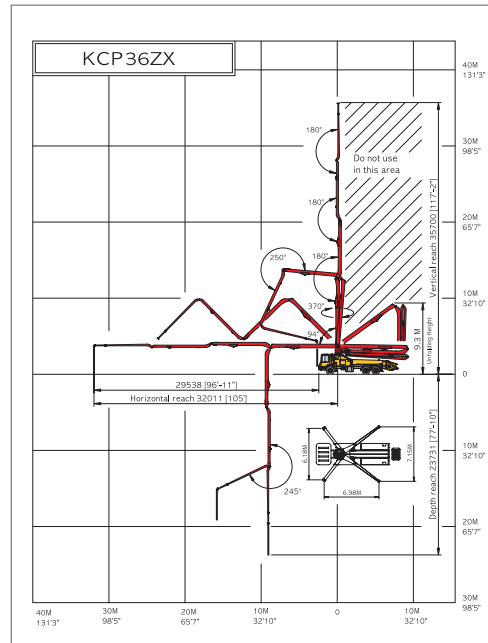
Maximum output	170 m³/h	(222 yd³/h)
Concrete cylinder	Ø230×2100mm	(9"×83')
Stroke per minute	32	
Concrete pressure(rod)	72 bar	(1044 psi)
Hopper capacity	0.6 m³	(21 ft³)
S-tube	Ø200×Ø180	(8"×7')
Hydraulic pump	Kawasaki K3V140DT (Rexroth A11VQ260)	
Cycling system	Hydraulic with manual overrides	
Max. aggregate size	60 mm	(2 1/2")

※Maximum theoretical values listed.

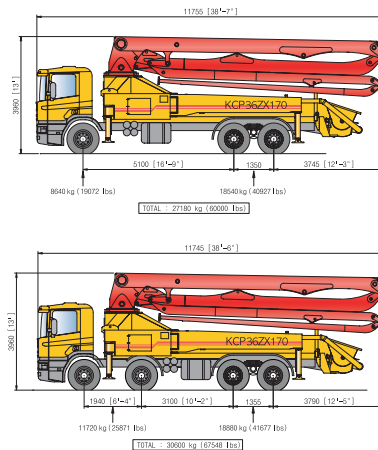
■ Truck mounted specifications

Available SCANA, VOLVO, MERCEDES BENZ,
MAN, IVECO, DAF, MAZ, ASTRA, MR MACK,
AMERICAN LAFRANCE, HYUNDAI, DAEWOO ...

■ Working diagram



■ Weight diagram



※Photos and drawings are for illustrative purpose only.
※Dimension will vary with different truck makers, models and specifications.
※Right to make technical amendments reserved.

Our Pride...

KCP38RX170



■ Boom specifications

Vertical reach	37.9 M	(124' 3")
Horizontal reach	34 M	(111' 8")
Reach from front of truck	31.6 M	(103' 9")
Unfolding height	9.4 M	(30' 10")
Section articulation	94° / 180° / 240° / 245°	
Rotation	370°	
Delivery line	125 mm	(5")
Proportional boom	Yes	
End hose length	4 M	(13')
Outrigger spread-front	6.18M	(20' 3")
Outrigger spread-rear	7.15M	(23' 5")
Max.outrigger weight	21,500 kg	(47460 lbs)

■ Pump specifications

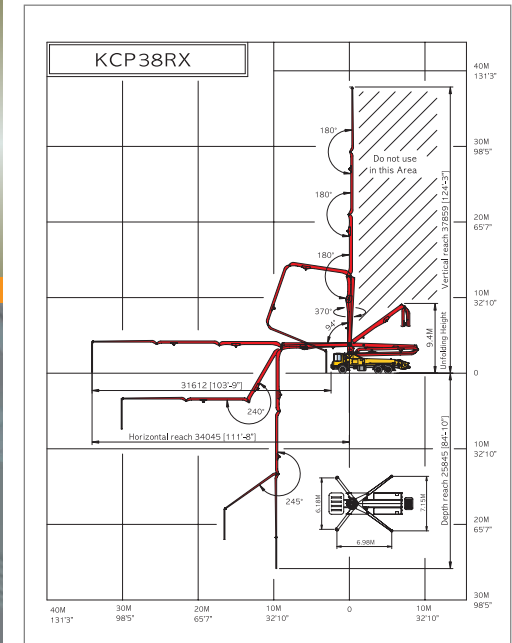
Maximum output	170 m³/h	(222 yd³/h)
Concrete cylinder	Ø230×2100mm	(9"×83')
Stroke per minute	32	
Concrete pressure(rod)	72 bar	(1044 psi)
Hopper capacity	0.6 m³	(21 ft³)
S-tube	Ø200×Ø180	(8"×7')
Hydraulic pump	Kawasaki K3V140DT (Rexroth A11VQ260)	
Cycling system	Hydraulic with manual overrides	
Max. aggregate size	60 mm	(2 1/2")

※Maximum theoretical values listed.

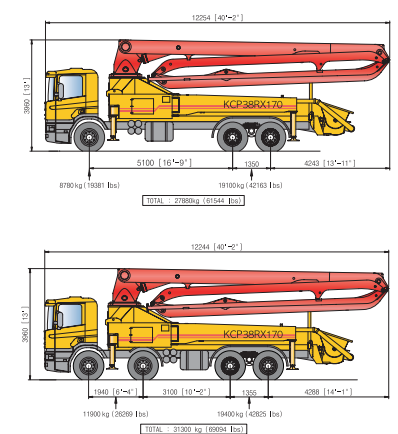
■ Truck mounted specifications

Available SCANA, VOLVO, MERCEDES BENZ,
MAN, IVECO, DAF, MAZ, ASTRA, MR MACK,
AMERICAN LAFRANCE, HYUNDAI, DAEWOO ...

■ Working diagram



■ Weight diagram



※Photos and drawings are for illustrative purpose only.
※Dimension will vary with different truck makers, models and specifications.
※Right to make technical amendments reserved.

Our Pride...

KCP38ZX170

■ Boom specifications

Vertical reach	37.8 M	(123' 9")
Horizontal reach	34 M	(111' 7")
Reach from front of truck	31.6 M	(103' 6")
Unfolding height	9.5 M	(30' 10")
Section articulation	94° / 180° / 250° / 245°	
Rotation	370°	
Delivery line	125 mm	(5")
Proportional boom	Yes	
End hose length	4 M	(13')
Outrigger spread-front	6.18 M	(20' 3")
Outrigger spread-rear	7.15 M	(23' 5")
Max.outrigger weight	21,500 kg	(47460 lbs)

■ Pump specifications

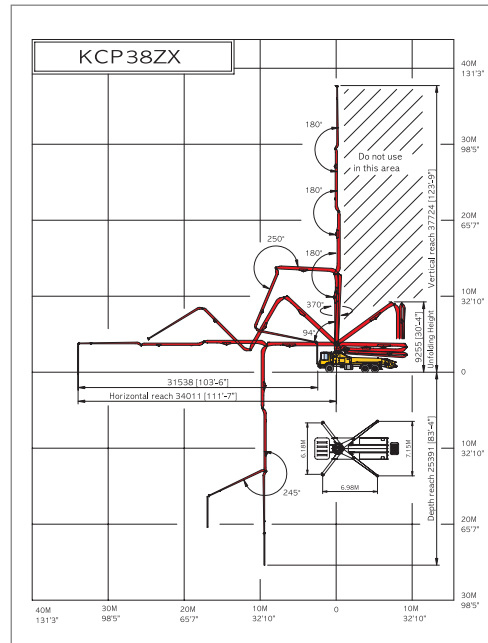
Maximum output	170 m³/h	(222 yd³/h)
Concrete cylinder	Ø230×2100mm	(9"×83')
Stroke per minute	32	
Concrete pressure(rod)	72 bar	(1044 psi)
Hopper capacity	0.6 m³	(21 ft³)
S-tube	Ø200×Ø180	(8"×7')
Hydraulic pump	Kawasaki K3V140DT (Rexroth A11VQ260)	
Cycling system	Hydraulic with manual overrides	
Max. aggregate size	60 mm	(2 1/2")

*Maximum theoretical values listed.

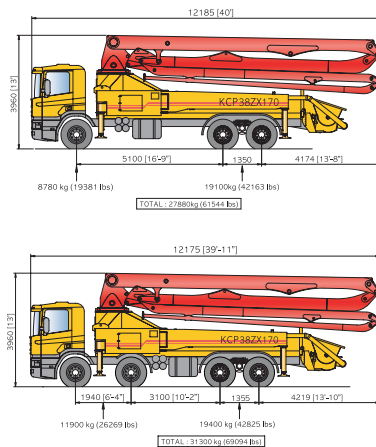
■ Truck mounted specifications

Available SCANA, VOLVO, MERCEDES BENZ,
MAN, IVECO, DAF, MAZ, ASTRA, MR MACK,
AMERICAN LAFRANCE, HYUNDAI, DAEWOO ...

■ Working diagram



■ Weight diagram



*Photos and drawings are for illustrative purpose only.
*Dimension will vary with different truck makers, models and specifications.
*Right to make technical amendments reserved.

Our Pride...

KCP40RX170

■ Boom specifications

Vertical reach	39.9 M	(130' 10")
Horizontal reach	35.7 M	(117' 2")
Reach from front of truck	32.8 M	(107' 9")
Unfolding height	9.3 M	(30' 7")
Section articulation	94° / 180° / 240° / 245°	
Rotation	370°	
Delivery line	125 mm	(5")
Proportional boom	Yes	
End hose length	4 M	(13')
Outrigger spread-front	6.18 M	(20' 3")
Outrigger spread-rear	8.1 M	(26' 7")
Max.outrigger weight	22,500 kg	(49670 lbs)

■ Pump specifications

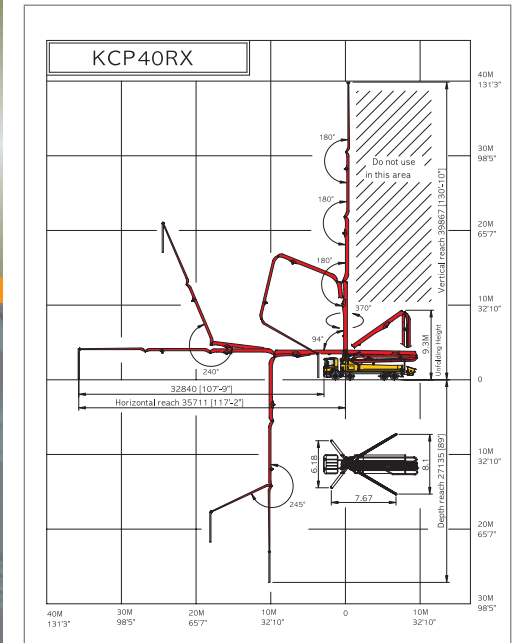
Maximum output	170 m³/h	(222 yd³/h)
Concrete cylinder	Ø230×2100mm	(9"×83')
Stroke per minute	32	
Concrete pressure(rod)	72 bar	(1044 psi)
Hopper capacity	0.6 m³	(21 ft³)
S-tube	Ø200×Ø180	(8"×7')
Hydraulic pump	Kawasaki K3V140DT (Rexroth A11VQ260)	
Cycling system	Hydraulic with manual overrides	
Max. aggregate size	60 mm	(2 1/2")

*Maximum theoretical values listed.

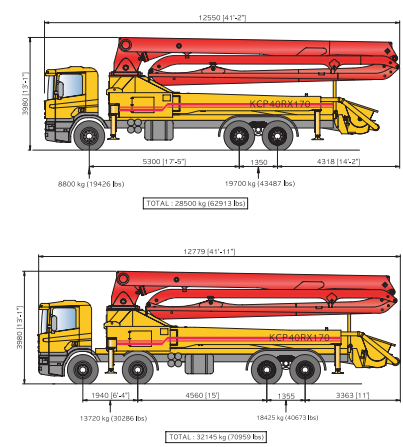
■ Truck mounted specifications

Available SCANA, VOLVO, MERCEDES BENZ,
MAN, IVECO, DAF, MAZ, ASTRA, MR MACK,
AMERICAN LAFRANCE, HYUNDAI, DAEWOO ...

■ Working diagram



■ Weight diagram



*Photos and drawings are for illustrative purpose only.
*Dimension will vary with different truck makers, models and specifications.
*Right to make technical amendments reserved.

Our Pride...

KCP45ZX170

■ Boom specifications

Vertical reach	44.3 M	(145' 5")
Horizontal reach	40.5 M	(132' 11")
Reach from front of truck	37.6 M	(123' 6")
Unfolding height	8.6 M	(28' 3")
Section articulation	92°/180°/225°/180°/245°	
Rotation	370°	
Delivery line	125 mm	(5")
Proportional boom	Yes	
End hose length	4 M	(13')
Outrigger spread-front	7.24 M	(19' 10")
Outrigger spread-rear	9.98 M	(22' 6")
Max.outrigger weight	28,000 kg	(61810 lbs)

■ Pump specifications

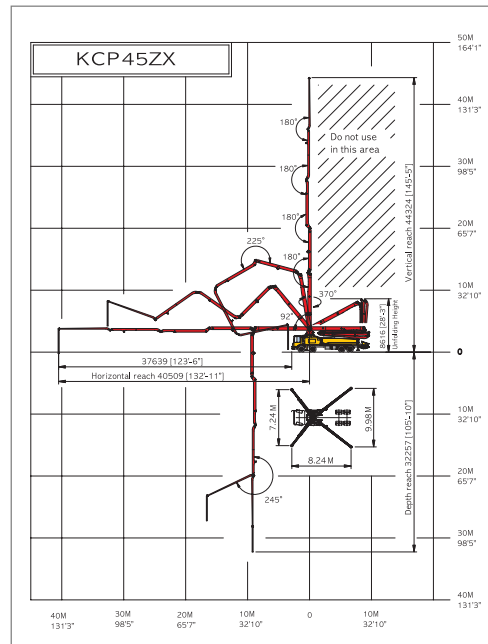
Maximum output	170 m³/h	(222 yd³/h)
Concrete cylinder	Ø230×2100mm	(9"×83")
Stroke per minute	32	
Concrete pressure(rod)	72 bar	(1044 psi)
Hopper capacity	0.6 m³	(21 ft³)
S-tube	Ø200×Ø180	(8"×7")
Hydraulic pump	Kawasaki K3V140DT (Rexroth A11VQ260)	
Cycling system	Hydraulic with manual overrides	
Max. aggregate size	60 mm	(2 1/2")

*Maximum theoretical values listed.

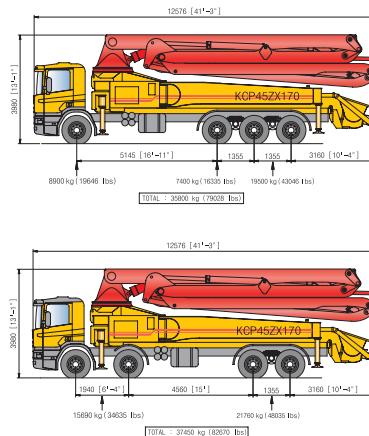
■ Truck mounted specifications

Available SCANA, VOLVO, MERCEDES BENZ,
MAN, IVECO, DAF, MAZ, ASTRA, MR MACK,
AMERICAN LAFRANCE, HYUNDAI, DAEWOO ...

■ Working diagram



■ Weight diagram



*Photos and drawings are for illustrative purpose only.
*Dimension will vary with different truck makers, models and specifications.
*Right to make technical amendments reserved.

Our Pride...

KCP48ZX170

■ Boom specifications

Vertical reach	47.1 M	(154' 6")
Horizontal reach	43.3 M	(142')
Reach from front of truck	40.2 M	(132')
Unfolding height	10.6 M	(34' 8")
Section articulation	92°/180°/225°/180°/210°	
Rotation	370°	
Delivery line	125 mm	(5")
Proportional boom	Yes	
End hose length	4 M	(13')
Outrigger spread-front	8.87 M	(29' 1")
Outrigger spread-rear	10.1 M	(33')
Max.outrigger weight	33,500 kg	(73950 lbs)

■ Pump specifications

Maximum output	170 m³/h	(222 yd³/h)
Concrete cylinder	Ø230×2100mm	(9"×83")
Stroke per minute	32	
Concrete pressure(rod)	72 bar	(1044 psi)
Hopper capacity	0.6 m³	(21 ft³)
S-tube	Ø200×Ø180	(8"×7")
Hydraulic pump	Kawasaki K3V140DT (Rexroth A11VQ260)	
Cycling system	Hydraulic with manual overrides	
Max. aggregate size	60 mm	(2 1/2")

*Maximum theoretical values listed.

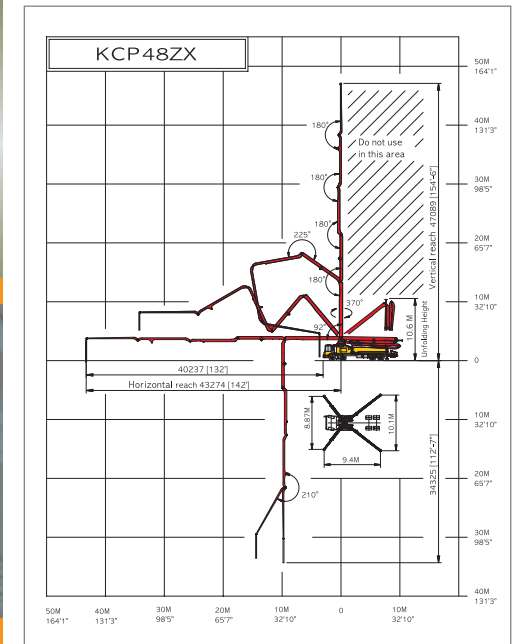
■ 48ZX200 - Optional

Maximum output	200 m³/h	(261 yd³/h)
Concrete cylinder	Ø280×2100mm	(11"×83")
Stroke per minute	25.6	
Concrete pressure(rod)	87.5 bar	(1270 psi)
S-tube	Ø220×Ø180	(9"×7")
Hydraulic pump	Kawasaki K3V180DT (Rexroth A20/LO190)	

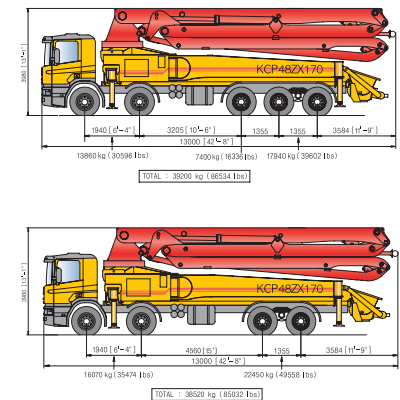
■ Truck mounted specifications

Available SCANA, VOLVO, MERCEDES BENZ,
MAN, IVECO, DAF, MAZ, ASTRA, MR MACK,
AMERICAN LAFRANCE, HYUNDAI, DAEWOO ...

■ Working diagram



■ Weight diagram



*Photos and drawings are for illustrative purpose only.
*Dimension will vary with different truck makers, models and specifications.
*Right to make technical amendments reserved.

Our Pride...

KCP50ZX170

■ Boom specifications

Vertical reach	49.4 M	(162' 2")
Horizontal reach	45.6 M	(149' 8")
Reach from front of truck	42.6 M	(139' 8")
Unfolding height	10.6 M	(34' 8")
Section articulation	92°/180°/225°/180°/210°	
Rotation	370°	
Delivery line	125 mm	(5")
Proportional boom	Yes	
End hose length	4 M	(13')
Outrigger spread-front	9.1M	(29' 10")
Outrigger spread-rear	9.95 M	(32' 8")
Max.outrigger weight	33,500 kg	(73950 lbs)

■ Pump specifications

Maximum output	170 m³/h	(222 yd³/h)
Concrete cylinder	Ø230×2100mm	(9"×83')
Stroke per minute	32	
Concrete pressure(rod)	72 bar	(1044 psi)
Hopper capacity	0.6 m³	(21 ft³)
S-tube	Ø200×Ø180	(8"×7')
Hydraulic pump	Kawasaki K3V140DT (Rexroth A11VQ260)	
Cycling system	Hydraulic with manual overrides	
Max. aggregate size	60 mm	(2 1/2")

*Maximum theoretical values listed.

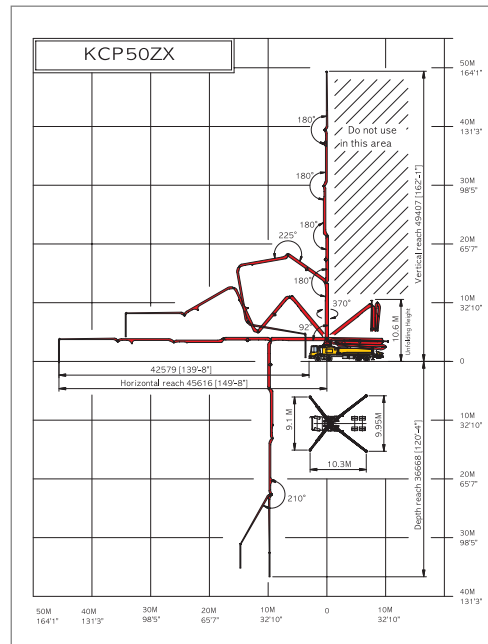
■ 50ZX200 – Optional

Maximum output	200 m³/h	(261 yd³/h)
Concrete cylinder	Ø280×2100mm	(11"×83')
Stroke per minute	25.6	
Concrete pressure(rod)	87.5 bar	(1270 psi)
S-tube	Ø220×Ø180	(9"×7')
Hydraulic pump	Kawasaki K3V180DT (Rexroth A20VLO190)	

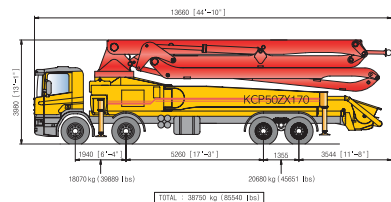
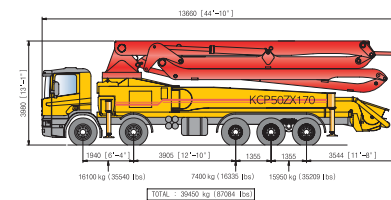
■ Truck mounted specifications

Available SCANA, VOLVO, MERCEDES BENZ,
MAN, IVECO, DAF, MAZ, ASTRA, MR MACK,
AMERICAN LAFRANCE, HYUNDAI, DAEWOO ...

■ Working diagram



■ Weight diagram



*Photos and drawings are for illustrative purpose only.
*Dimension will vary with different truck makers, models and specifications.
*Right to make technical amendments reserved.

Our Pride...

KCP52ZX200

■ Boom specifications

Vertical reach	51.3 M	(168' 5")
Horizontal reach	47.5 M	(155' 11")
Reach from front of truck	44.5 M	(145' 11")
Unfolding height	11.3M	(36' 11")
Section articulation	92°/180°/225°/180°/210°	
Rotation	370°	
Delivery line	125 mm	(5")
Proportional boom	Yes	
End hose length	4 M	(13')
Outrigger spread-front	9.1 M	(29' 10")
Outrigger spread-rear	10.6 M	(34' 10")
Max.outrigger weight	33,500 kg	(73950 lbs)

■ Pump specifications

Maximum output	200 m³/h	(261 yd³/h)
Concrete cylinder	Ø280×2100mm	(11"×83')
Stroke per minute	25.6	
Concrete pressure(rod)	87.5 bar	(1270 psi)
Hopper capacity	0.6 m³	(21 ft³)
S-tube	Ø220×Ø180	(9"×7')
Hydraulic pump	Rexroth A20VLO190 (Kawasaki K3V180DT)	
Cycling system	Hydraulic with manual overrides	
Max. aggregate size	60 mm	(2 1/2")

*Maximum theoretical values listed.

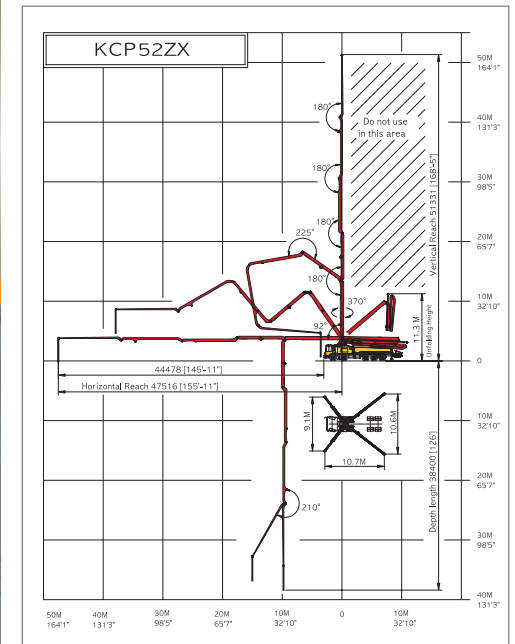
■ 52ZX225 – Optional

Maximum output	225 m³/h	(300 yd³/h)
Stroke per minute	29	
Hydraulic pump	Rexroth A20VLO190	

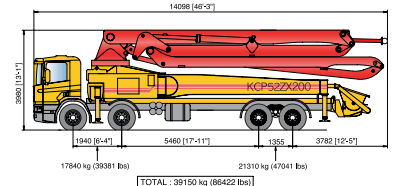
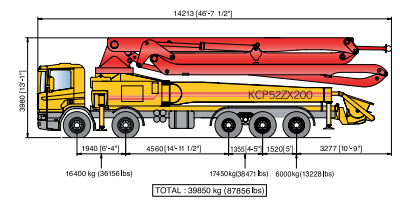
■ Truck mounted specifications

Available SCANA, VOLVO, MERCEDES BENZ,
MAN, IVECO, DAF, MAZ, ASTRA, MR MACK,
AMERICAN LAFRANCE, HYUNDAI, DAEWOO ...

■ Working diagram



■ Weight diagram



*Photos and drawings are for illustrative purpose only.
*Dimension will vary with different truck makers, models and specifications.
*Right to make technical amendments reserved.

Our Pride...

KCP60ZS225

■ Boom specifications

Vertical reach	59.5 M	(195' 4")
Horizontal reach	55.9 M	(183' 4")
Reach from front of truck	52.9 M	(173' 6")
Unfolding height	12.4 M	(40' 10")
Section articulation	92°/180°/215°/180°/210°	
Rotation	370°	
Delivery line	125 mm	(5")
Proportional boom	Yes	
End hose length	4 M	(13')
Outrigger spread-front	11.8 M	(38' 9")
Outrigger spread-rear	16 M	(52' 8")
Max.outrigger weight	45,000 kg	(99340 lbs)

■ Pump specifications

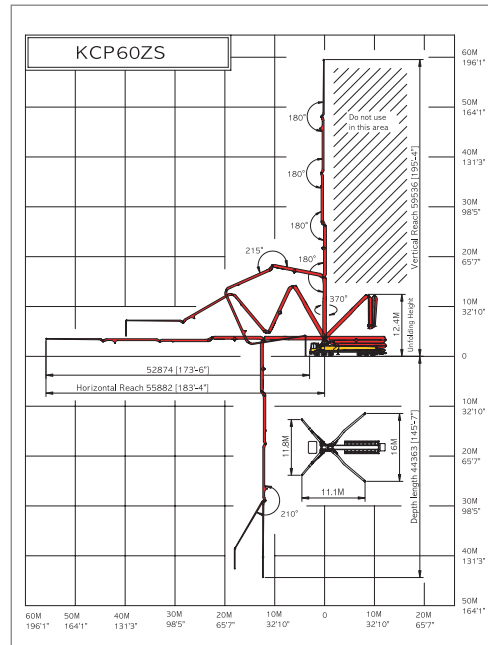
Maximum output	225 m³/h	(300 yd³/h)
Concrete cylinder	Ø280×2100mm	(11"×83')
Stroke per minute	29	
Concrete pressure(rod)	87.5 bar	(1270 psi)
Hopper capacity	0.6 m³	(21 ft³)
S-tube	Ø220×Ø180	(9"×7")
Hydraulic pump	Rexroth A20VLO190	
Cycling system	Hydraulic with manual overrides	
Max. aggregate size	60 mm	(2 1/2")

*Maximum theoretical values listed.

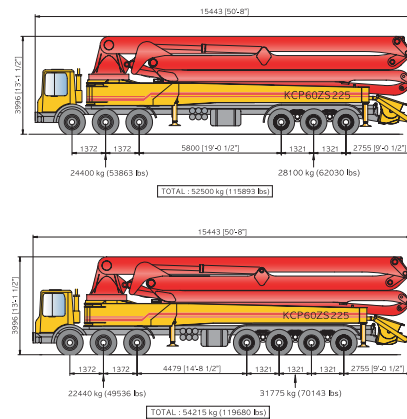
■ Truck mounted specifications

Available SCANA, VOLVO, MERCEDES BENZ, MAN, IVECO, DAF, MAZ, ASTRA, MR MACK, AMERICAN LAFRANCE, HYUNDAI, DAEWOO ...

■ Working diagram



■ Weight diagram



*Photos and drawings are for illustrative purpose only.
*Dimension will vary with different truck makers, models and specifications.
*Right to make technical amendments reserved.

Our Pride...

KCP65ZS225

■ Boom specifications

Vertical reach	64.4 M	(211' 2")
Horizontal reach	60.6 M	(198' 11")
Reach from front of truck	57.4 M	(188' 2")
Unfolding height	14.5 M	(47' 7")
Section articulation	92°/180°/215°/180°/210°	
Rotation	370°	
Delivery line	125 mm	(5")
Proportional boom	Yes	
End hose length	4 M	(13')
Outrigger spread-front	12.8 M	(41' 11")
Outrigger spread-rear	13.8 M	(45' 4")
Max.outrigger weight	65,000 kg	(143500 lbs)

■ Pump specifications

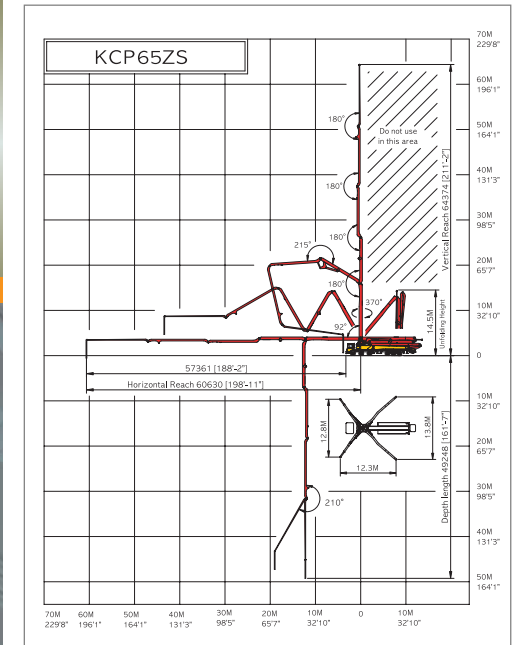
Maximum output	225 m³/h	(300 yd³/h)
Concrete cylinder	Ø280×2100mm	(11"×83')
Stroke per minute	29	
Concrete pressure(rod)	87.5 bar	(1270 psi)
Hopper capacity	0.6 m³	(21 ft³)
S-tube	Ø220×Ø180	(9"×7")
Hydraulic pump	Rexroth A20VLO190	
Cycling system	Hydraulic with manual overrides	
Max. aggregate size	60 mm	(2 1/2")

*Maximum theoretical values listed.

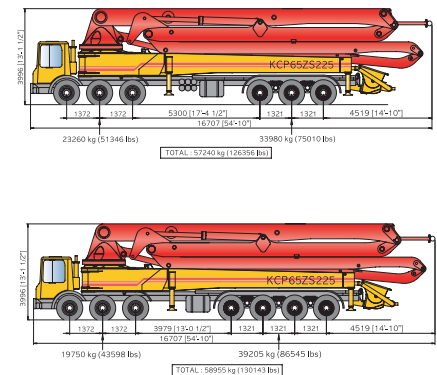
■ Truck mounted specifications

Available SCANA, VOLVO, MERCEDES BENZ, MAN, IVECO, DAF, MAZ, ASTRA, MR MACK, AMERICAN LAFRANCE, HYUNDAI, DAEWOO ...

■ Working diagram



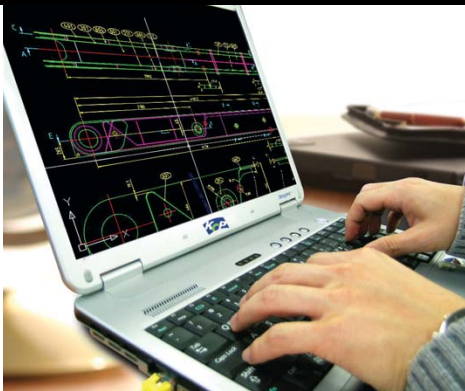
■ Weight diagram



*Photos and drawings are for illustrative purpose only.
*Dimension will vary with different truck makers, models and specifications.
*Right to make technical amendments reserved.



Pioneer of Concrete Pumping!



King of Concrete Pumps!

